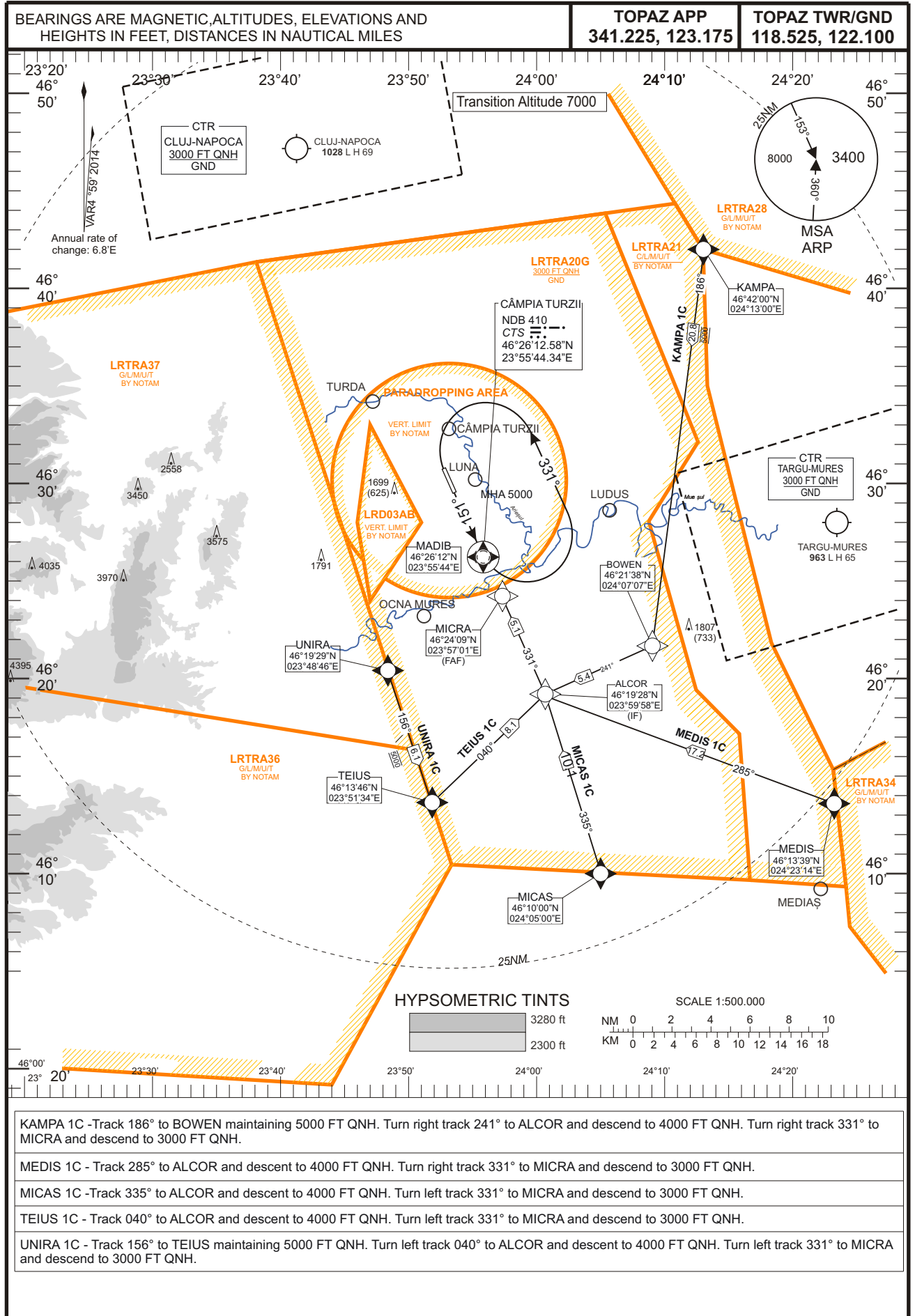


**RNAV^(GNSS) STANDARD ARRIVAL
CHART - INSTRUMENT**

**CÂMPIA TURZII (LRCT)
RWY 33**

KAMPA 1C, MEDIS 1C, MICAS 1C, TEIUS 1C, UNIRA 1C



KAMPA 1C -Track 186° to BOWEN maintaining 5000 FT QNH. Turn right track 241° to ALCOR and descend to 4000 FT QNH. Turn right track 331° to MICRA and descend to 3000 FT QNH.

MEDIS 1C - Track 285° to ALCOR and descent to 4000 FT QNH. Turn right track 331° to MICRA and descend to 3000 FT QNH.

MICAS 1C -Track 335° to ALCOR and descent to 4000 FT QNH. Turn left track 331° to MICRA and descend to 3000 FT QNH.

TEIUS 1C - Track 040° to ALCOR and descent to 4000 FT QNH. Turn left track 331° to MICRA and descend to 3000 FT QNH.

UNIRA 1C - Track 156° to TEIUS maintaining 5000 FT QNH. Turn left track 040° to ALCOR and descent to 4000 FT QNH. Turn left track 331° to MICRA and descend to 3000 FT QNH.

COORDINATES			MIN ALT (FT)
ALCOR (IF)	461928N	0235958E	4000
BOWEN	462138N	0240707E	4000
KAMPA	464200N	0241300E	5000
MADIB	462612N	0235544E	5000
MEDIS	461339N	0242314E	5000
MICAS	461000N	0240500E	5000
MICRA (FAF)	462409N	0235901E	3000
TEIUS	461346N	0235134E	5000
UNIRA	461929N	0234846E	5000

RADIO COMMUNICATION FAILURE

- a. If a STAR was previously assigned, set transponder 7600 and proceed according to assigned STAR. Follow instrument approach procedure ILS RWY 33 or NDB RWY 33 for landing.
- b. If vectoring was initiated, set transponder 7600 and continue on assigned heading and last cleared altitude for 1 minute. Proceed directly to ALCOR, then FAF/FAP. Follow instrument approach procedure ILS RWY33 or NDB RWY33 for landing.
- c. If a STAR was not assigned, set transponder 7600 and proceed according to FPL STAR. Follow instrument approach procedure ILS RWY33 or NDB RWY33 for landing.

Descending shall be executed in accordance with vertical restrictions specified in charts.

LRCT RNAV ARRIVAL SEQUENCE RWY33					
LEG	TYPE OF LEG	DISTANCE (NM)	MAGNETIC HEADING	SPEED (KTS)	ALTITUDE (FT)
KAMPA 1C					
KAMPA - BOWEN	TF	20.8	186	-270	5000
BOWEN - ALCOR	TF	5.4	241	-270	4000
ALCOR - MICRA	TF	5.1	331	-250	3000
MEDIS 1C					
MEDIS - ALCOR	TF	17.2	285	-270	4000
ALCOR - MICRA	TF	5.1	331	-250	3000
MICAS 1C					
MICAS - ALCOR	TF	10.1	335	-270	4000
ALCOR - MICRA	TF	5.1	331	-250	3000
TEIUS 1C					
TEIUS - ALCOR	TF	8.1	040	-270	4000
ALCOR - MICRA	TF	5.1	331	-250	3000
UNIRA 1C					
UNIRA - TEIUS	TF	6.1	156	-270	5000
TEIUS - ALCOR	TF	8.1	040	-270	4000
ALCOR - MICRA	TF	5.1	331	-250	3000